

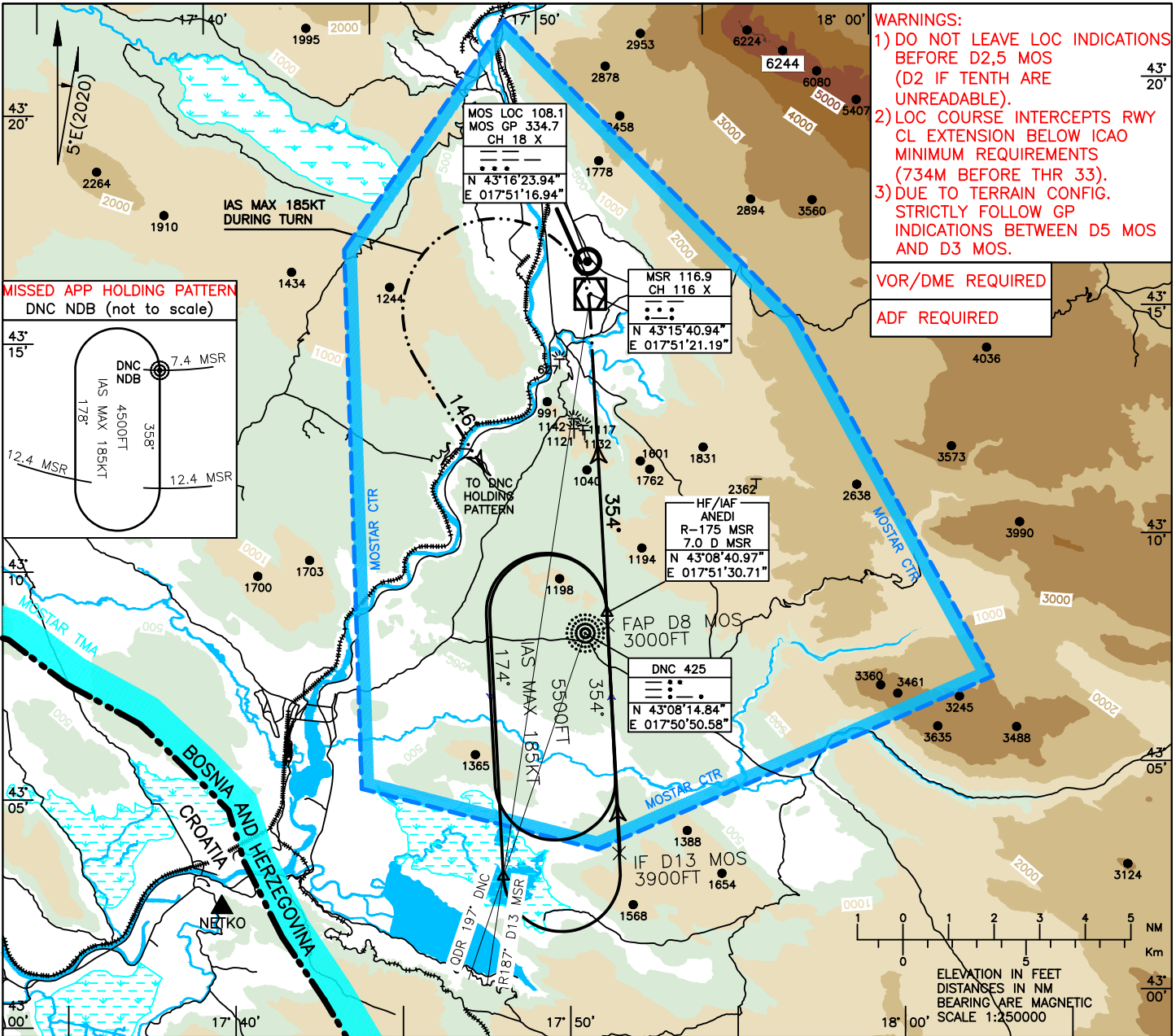
INSTRUMENT APPROACH CHART-ICAO

AD ELEV 174FT
HEIGHTS RELATED TO
FICT. THR ELEV 154FT

TRANSITION ALTITUDE
10 000FT
VAR 5°E(2020)

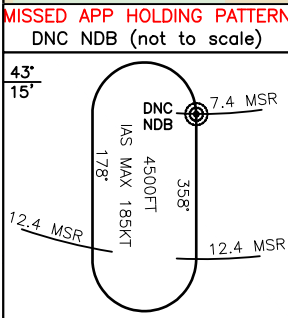
APP 120.225
129.875
TWR 125.550
ATIS 126.225

MOSTAR (LQMO) IGS-Z RWY33 SPECIAL PROCEDURE



- WARNINGS:**
- DO NOT LEAVE LOC INDICATIONS BEFORE D2,5 MOS (D2 IF TENTH ARE UNREADABLE).
 - LOC COURSE INTERCEPTS RWY CL EXTENSION BELOW ICAO MINIMUM REQUIREMENTS (734M BEFORE THR 33).
 - DUE TO TERRAIN CONFIG. STRICTLY FOLLOW GP INDICATIONS BETWEEN D5 MOS AND D3 MOS.

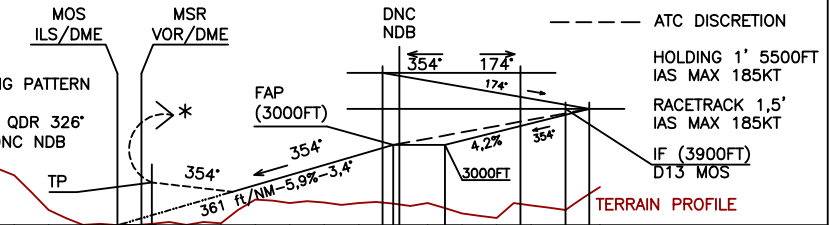
VOR/DME REQUIRED
ADF REQUIRED



GP: 3,4°
MISSED APPROACH:
MAINTAIN TRACK 354° CLIMBING TO 4500FT.
AT D1 MOS DME TURN LEFT TO QDR 326°
(TRACK 146°) DNC NDB TO ENTER
DNC HOLDING PATTERN AT 4500FT.
IAS MAX 185KT DURING TURN.

* TO DNC HOLDING PATTERN AT 4500FT
TP D1 MOS TO QDR 326°
(TRACK 146°) DNC NDB

FOR A NEW APPROACH SEE REMARKS (**)
ELEVATIONS REFERRED TO FICT THR



MOS ILS (DME) ← (NM) FICT THR ELEV 154 MOS ILS (DME)
MSR VOR/DME ← (NM) MSR VOR/DME

| CAT. | IGS RWY 33 OCA (H) | | GS | FT MIN | MOS | DME | ALT (HGT) | REMARKS: 1) MOS LOC/GP/DME EQUIPMENTS ARE CO-LOCATED ABOUT 270M EAST FROM THR 33. 2) LOC COURSE OFFSET 21° (OUTSIDE ICAO REQUIREMENTS). 3) RWY 33 QFU/GEO: 333°/338°. ** ENTERING ON INBOUND LEG OF DNC NDB HOLDING PATTERN RE-CAPTURE LOC COURSE AS SOON AS POSSIBLE AND DESCEND TO 3000FT BEFORE D8 MOS THEN FOLLOW NOMINAL FINAL APPROACH TRACK FOR LANDING. ATC CLEARANCE NEEDED. | MSA 25NM MSR VOR/DME | | | | |
|------|--------------------|-------------|-----|--------|-----|------------|-----------|---|----------------------|-----|-----|---|------------|
| | OCA (OCH) | | | | | | | | | 120 | 722 | 4 | 1598(1444) |
| | MACG 2,5% | MACG 4% | | | | | | | | | | | |
| A | 1961 (1807) | 1279 (1125) | 120 | 722 | 4 | 1598(1444) | | | | | | | |
| B | 1971 (1817) | 1289 (1135) | 130 | 782 | 3 | 1237(1083) | | | | | | | |
| C | 1984 (1830) | 1302 (1148) | 140 | 842 | 2 | 876(722) | | | | | | | |
| | | | 150 | 903 | 1 | 515(361) | | | | | | | |
| | | | 160 | 963 | 0 | 154(0) | | | | | | | |

CHG: MAGNETIC BEARINGS;

THIS PAGE INENTIONALY LEFT BLANK